

**IVF At a glance**

The process that will change your life



Fernando M. Akerman, M.D.  
Farah S. Chuong, M.D.  
Edward H. Illions, M.D.  
Nicole Arencibia, A.P.R.N.

**IVF At a glance**  
The process that will change your life

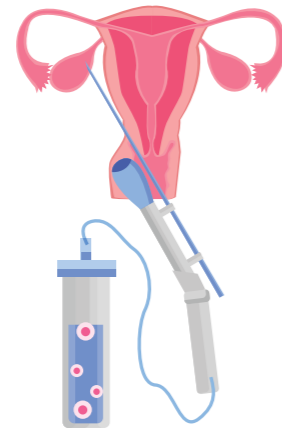


In some cases, oral contraceptive pills may be prescribed to the patient, prior to starting stimulation.

**STEP 1** APPROXIMATELY 7 TO 12 DAYS

**Ovarian Stimulation**

You will undergo daily injectable medications to stimulate follicles in the ovaries and try to avoid early ovulation. Once the follicles reach an adequate size, you'll be given a special injection to trigger maturation of the eggs contained in the follicles.

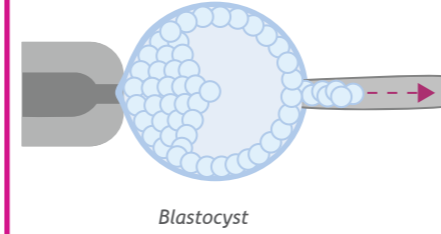


**STEP 2** 2 DAYS LATER

**Egg Retrieval**

Your eggs are retrieved approximately 35 hours after the final injection. Under sedation administered intravenously by an anesthesiologist, one of our specialized physicians will perform an ultrasound-guided retrieval of your eggs, which will be sent to our Center's Lab (adjacent to our OR) to be fertilized with sperm and will develop in culture media inside an incubator. The egg retrieval process generally takes 15-30 minutes to complete, and you can go home within a few hours.

**STEP 4** DAYS 5-6 AFTER RETRIEVAL



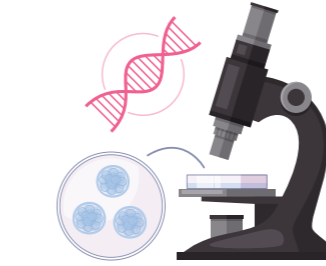
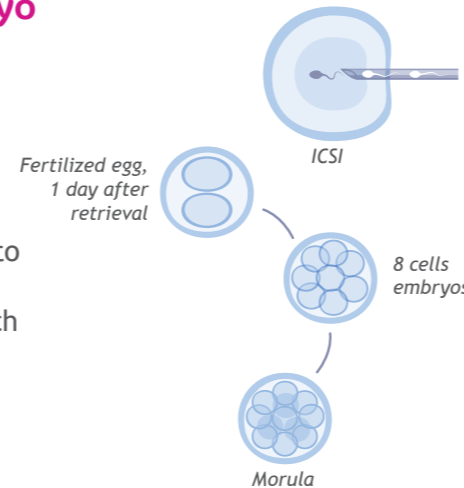
**Embryo Biopsy**

If undergoing genetic screening, embryo biopsy and freezing are performed between days 5 and 7 after the retrieval. Embryo biopsy is a process that requires an embryologist to carefully remove a few cells from your embryo(s) for genetic testing.

**STEP 3** FROM DAY OF RETRIEVAL UP TO 5 TO 6 DAYS

**Fertilization / Embryo Culture**

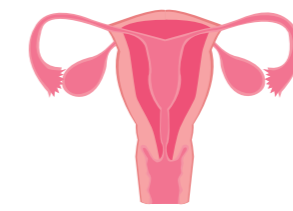
Following fertilization of eggs by intracytoplasmic sperm injection (ICSI) on the day of egg retrieval, the embryos are allowed to grow in our laboratory for 5 to 6 days until they reach a stage named blastocyst (containing approximately 100-120 cells).



**STEP 5** 7 TO 10 DAYS AFTER BIOPSY

**Pre-Implantation Genetic Testing (PGT)**

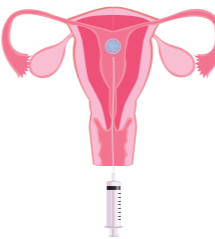
The embryonic cells are shipped to a genetics laboratory to screen for abnormalities in the number of chromosomes and certain mutations. In 7-10 days after the biopsy, the genetics lab will provide your physician with a report documenting the results of the biopsy of your embryos (including their gender). Your doctor will review the results with you during your next visit.



**STEP 6** BETWEEN 6 TO 8 WEEKS

**Uterine Priming**

You will begin a Frozen Embryo Transfer (FET) cycle. During this period, you will administer estrogen and progesterone medications. Based on the protocol your doctor recommends for your case, you may also need other medications.



**STEP 4** 5 DAYS AFTER RETRIEVAL

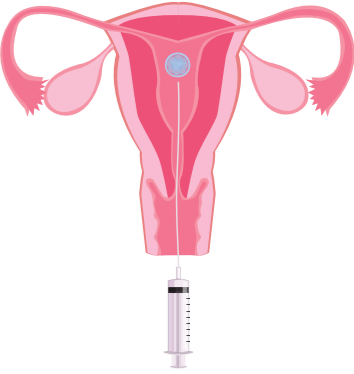
**Embryo Transfer**

If, as a patient, you choose to transfer the embryo WITHOUT being genetically analyzed, the best quality embryo will be selected and transferred to your uterus using a thin and flexible catheter. This procedure is performed by one of our doctors, does not require anesthesia, and takes approximately 30 minutes. **With this option, we cannot test embryos for chromosome abnormalities.**

**STEP 7** BETWEEN 8 TO 10 WEEKS AFTER RETRIEVAL

**Frozen Embryo Transfer**

Following a PGT cycle, an embryo is selected for thawing, and it is transferred into your uterus using a soft, thin catheter. This procedure takes approximately 30 minutes, and it does NOT require anesthesia. This procedure is performed in our Center by one of our doctors.



**Pregnancy Test**

9 days after embryo transfer, you will have a serum pregnancy test. If the test is positive, an ultrasound will be performed in 2-3 weeks. Most cases will require you to continue with estrogen and progesterone regimen based on recommended protocol.

